

# Certificate of Analysis

This sample has been tested according to OAR 333-007.

Certificate number 4093  
Effective date 9/2/2016

1 of 4

## Ananda Farms

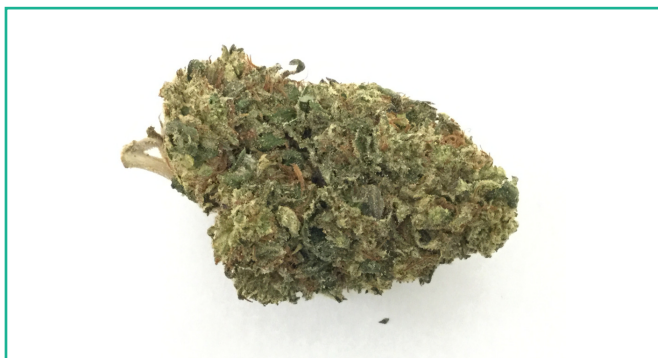
Williams, OR 97544  
Lic. # 100019879F7

## Sample: C02318

Strain: Critical Hog  
Batch #: 1A4010300000836000000809; Batch Size: 3891 - grams  
Ordered: 04/27/2017; Sampled: 04/27/2017; Completed: 05/04/2017; Expires: 05/04/2018

## Critical Hog

Plant, Flower - Cured,  
Harvest Process Lot: ; METRC Batch: 1A4010300000836000000809; METRC Sample: 1A4010300000836000000828



21.5%

Total THC

<LOQ

Total CBD

## Cannabinoids

Pass

Analyte	LOQ	Mass	Mass	
	mg/g	%	mg/g	
THCa	1	20.4	204	<div style="width: 100%;"></div>
Δ9-THC	1	3.6	36	<div style="width: 10%;"></div>
CBDa	1	<LOQ	<LOQ	
CBD	1	<LOQ	<LOQ	
CBN	1	<LOQ	<LOQ	
<b>Total</b>		<b>24.0</b>	<b>240</b>	

Surrogate standard recovery (Acceptance criteria: 90 - 110%) **98.3 %**

05/03/2017 00:00:00

170502R2-CANN

Cannabinoids Method: HPLC using an Agilent 1100 with DAD. Deviations from standard method or conditions: None. Recoveries for all analytes: 90-110%. Recoveries for internal standard: 90 - 110%. Uncertainties (based upon replicate recoveries) < 5% RSD. Sample and reagent blanks: < LOQ for all analytes. Values for plant matter are adjusted for moisture content. Total THC = THCa \* 0.877 + d9-THC, Total CBD = CBDa \* 0.877 + CBD. Abbreviations: LOQ = Limit of Quantitation, DAD = Diode Array Detector, HPLC = High Pressure Liquid Chromatography, RSD = Relative Standard Deviation, NR = Not Reported.

# Certificate of Analysis

This sample has been tested according to OAR 333-007.

Certificate number 4093  
Effective date 9/2/2016

2 of 4

## Ananda Farms

Williams, OR 97544  
Lic. # 100019879F7

## Sample: C02318

Strain: Critical Hog

Batch #: 1A4010300000836000000809; Batch Size: 3891 - grams

Ordered: 04/27/2017; Sampled: 04/27/2017; Completed: 05/04/2017; Expires: 05/04/2018

## Critical Hog

Plant, Flower - Cured,

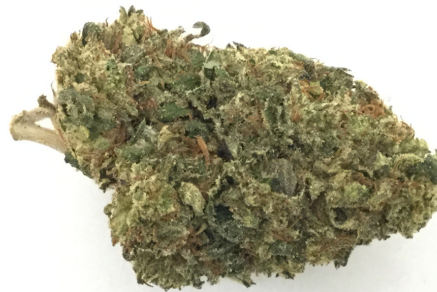
Harvest Process Lot: ; METRC Batch: 1A4010300000836000000809; METRC Sample: 1A4010300000836000000828



## Moisture

8.5%

Moisture



05/03/2017 00:00:00

Moisture Method: Loss on drying using Sartorius Mark 3. Deviations from standard method or conditions: None. Uncertainties: Not determined. NR = Not Reported

# Certificate of Analysis

This sample has been tested according to OAR 333-007.



Certificate number 4093  
Effective date 9/2/2016

3 of 4

## Ananda Farms

Williams, OR 97544  
Lic. # 100019879F7

## Sample: C02318

Strain: Critical Hog

Batch #: 1A4010300000836000000809; Batch Size: 3891 - grams

Ordered: 04/27/2017; Sampled: 04/27/2017; Completed: 05/04/2017; Expires: 05/04/2018

## Critical Hog

Plant, Flower - Cured,

Harvest Process Lot: ; METRC Batch: 1A4010300000836000000809; METRC Sample: 1A4010300000836000000828

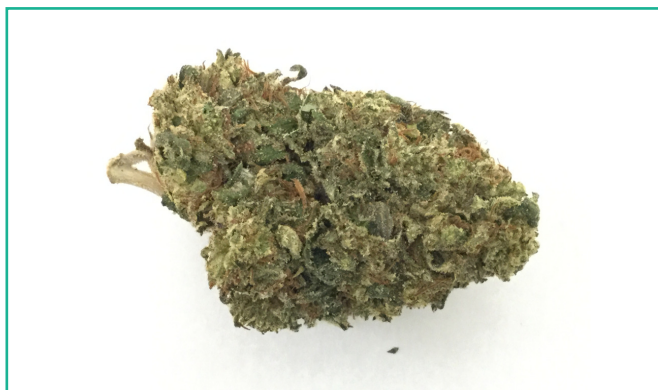


## Water Activity

Pass

0.520

Water Activity



170502R2-CANN

05/03/2017 00:00:00

Water Activity Method: Chilled mirror dewpoint using Decagon AquaLab 3TE. Deviations from standard method or conditions: None. Uncertainties:  $\pm 0.003$  aw. NR = Not Reported



Rodger Voelker, Ph.D  
Lab Director



## Ananda Farms

Williams, OR 97544  
Lic. # 100019879F7

## Sample: C02318

Strain: Critical Hog  
Batch #: 1A4010300000836000000809; Batch Size: 3891 - grams  
Ordered: 04/27/2017; Sampled: 04/27/2017; Completed: 05/04/2017; Expires: 05/04/2018

## Critical Hog

Plant, Flower - Cured,  
Harvest Process Lot: ; METRC Batch: 1A4010300000836000000809; METRC Sample: 1A4010300000836000000828



## Terpenes

Analyte	LOQ	Mass	Mass
	mg/g	mg/g	%
β-Myrcene	0.01	14.30	1.430
trans-Ocimene	0.01	4.18	0.418
β-Caryophyllene	0.03	1.80	0.180
α-Humulene	0.03	1.26	0.126
Linalool	0.01	0.56	0.056
α-Bisabolol	0.05	0.54	0.054
Guaiol	0.05	0.48	0.048
Caryophyllene Oxide	0.05	0.29	0.029
cis-Ocimene	0.01	0.23	0.023
β-Pinene	0.01	0.20	0.020
Camphene	0.01	0.11	0.011
Eucalyptol	0.01	0.08	0.008
Terpinolene	0.01	0.06	0.006
α-Terpineol	0.01	0.04	0.004
α-Pinene	0.01	<LOQ	<LOQ
Fenchone	0.01	<LOQ	<LOQ
3-Carene	0.01	<LOQ	<LOQ
α-Terpinene	0.01	<LOQ	<LOQ
Borneol	0.01	<LOQ	<LOQ
Isoborneol	0.01	<LOQ	<LOQ
R(+)-Limonene	0.01	<LOQ	<LOQ
cis-Nerolidol	0.03	<LOQ	<LOQ
trans-Nerolidol	0.03	<LOQ	<LOQ
Fenchol	0.01	<LOQ	<LOQ
γ-Terpinene	0.01	<LOQ	<LOQ
α-Phellandrene	0.01	<LOQ	<LOQ



Skunk



Earthy



Cinnamon



Hops



Lavender

Terpenes Method: Static-headspace using a PerkinElmer HS40/Agilent 6890 GC/Agilent 5973 Mass Spectrometer. QA/QC: Deviations from standard method or conditions: None. Recoveries for internal standard: 80-110%. Uncertainties: Not determined. Reagent blanks: < LOQ for all analytes. Abbreviations: LOQ = Limit of Quantitation, ND = None Detected; NR = Not Reported